



# RELY ON US

every smile counts



2020  
**EQUIPMENT**  
specialty catalog

# The Equipment Team



**Bruce Fowler**  
Equipment Manager

*Bruce has enjoyed a variety of roles over a 20-year career in the dental industry and he enjoys strong partnerships with all our manufacturer partners. With both commercial and technical experience, he knows what it takes to consistently deliver reliable equipment solutions. Bruce welcomes any opportunity to be involved in contributing to patient care and growing dental practices: "For me, it is a rare privilege to be involved in work with such a deep and wide community reach – we potentially connect with every New Zealander".*

Thank you for partnering with Henry Schein for equipment that you can depend on. The testing circumstances that have characterised 2020 demonstrate the value of a robust supply chain and in-house expertise. At a time when our customers have needed continuity and assurance, Henry Schein has been prepared to respond to the call.

We are the New Zealand presence for global brands that lead the way in dental technology. It takes skill and knowledge to help you make the right selection from a sophisticated range, achieve a smooth installation and be on hand with responsive back-up. Henry Schein brings decades of experience to the market and we continue to invest in our people to stay relevant and be there when you need us.

I'd encourage you to speak with one of our team about your plans: they want you to be successful and have access to solutions that meet the most specific needs, including the resources to fund it. Thanks again - we look forward to being of service.



**Kate Hong**  
Equipment Sales Specialist

Kate began her career in the medical device industry in her home country of Korea. There her role was selling medical lasers and surgical products to Middle Eastern and European orthopedic and plastic surgeons. She then moved into the dental industry, selling Dental Implants and equipment both in Australia and New Zealand.

She moved to New Zealand in 2017, and joined the Henry Schein Team in July of 2019.

Working alongside clients to tailor packages that will add value and help grow their businesses, whilst also benefiting their patient's experience, is what she finds most rewarding in her current role.

She believes providing best in class customer care, ongoing support and continued education opportunities are all critical factors in giving the doctors she works with the peace of mind they need to operate seamlessly day after day.

Kate has discovered, in her time at Henry Schein, is what sets this company apart from its competitors is our team's willingness to listen to our customers and provide the widest range of solutions with the highest quality brands. On her days off she enjoys travelling, swimming and walking through the beautiful nature that New Zealand has to offer.



**Edward Harrison**  
Equipment Sales Specialist

Edward emigrated from England in 2005 with his family to start a new adventure in New Zealand.

He worked in consumer electronics managing a number of electronics stores developing a career which advanced into buying and product management. In 2013, a new opportunity arose in the Equipment Team at Henry Schein and Edward jumped

at the challenge to join this innovative industry. The digital technology, diverse product portfolio and range of suppliers from around the world excites Edward who enjoys providing complete solutions to dental practices nationwide.

Edward believes the future lies in digital devices and a digitally integrated setup, and he is confident Henry Schein has the products and support to help with workflow selection and execution of an innovative practice. He finds the most rewarding part of his role to be when the patients benefit from the impact of the high tech solution the doctor and he have collaborated on to deliver.

Edward is an avid golfer and enjoys all of the courses New Zealand has to offer. When not playing golf he enjoys travelling and spending time with family and friends.

# The Equipment Team



## **Daniel Els** Equipment Sales Specialist

Daniel has been in the dental sales industry for 24 years and moved to New Zealand from South Africa 4 years ago.

Daniel finds it very rewarding to offer a dental practice cutting edge equipment that improves efficiency whilst creating a better return on time and capital investment.

With his knowledge and experience, coupled with the resources of the greater Henry Schein team he can offer practical advice on variable options to improve the bottom line of a dental practice. Good equipment purchases will increase practice appeal and patient treatment plan acceptance.

The principles of dentistry are constantly improving with today's advanced technologies, which makes the dental practice more exciting and interactive with regard to treatment options and improved outcomes.

Daniel is proud to be a part of a Henry Schein Equipment Team that is able to offer expertise and comprehensive solutions for both the new and established practice.

*Nelson Mandela – "It always seems impossible until it's done"*



## **Christo Kovachev** Digital Imaging, CAD/CAM, Software Integration and Support

Christo has been part of the Henry Schein training and support team for 5 years now and totally loves the industry. Every day is different in this always evolving environment with each customer having their own unique set of requirements and expectations. This makes for a challenging yet rewarding exercise in dealing with new installations and supporting existing customers.

Christo comes from an IT and electro/mechanical background and has worked as a contractor for many years around the world in varying industries- from mining and military to corporate and medical areas. This gives him a broad range of skills and experience to tap into when dealing with everyday issues.

Christo believes what we do at Henry Schein is critical to the success of dental practices of all sizes and most importantly the wellbeing and effective treatment of patients.

On a personal level he has 2 young children, and a passion for travelling, camping and fishing.



## **Dustin Jacobsohn** CAD/CAM and Digital Imaging Technician

After completion of his studies in 2005 Dustin started working as an IT Technician until in 2007 he was given an opportunity to work in a Dental Manufacturing facility. He worked for this company for six years until he decided he would like to run his own business, which he did for two years focusing primarily on IT and networking.

During this time he was called upon to do a number of CAD/CAM installs and assisted a lot of dental practices and laboratories which led to him being approached by a dental supply company to work for them full time. He worked for this company for two years before relocating from South Africa to New Zealand to join Henry Schein in April 2017. Within the last four years he has been fortunate to attend various training sessions abroad in Finland, Germany and Australia.

Dustin has always kept his IT knowledge current as he feels this is really important within the Dental Industry as we are in the digital space and every day we move further away from analogue and into the digital era. He has also expanded his knowledge and experience within the Digital Imaging field and application support.

Within his role here at Henry Schein one of the things he loves most is the constant learning potential, not a day has gone by where he hasn't had the opportunity to learn something new or to find a better way of doing something. He believes this to be very important as if you are not battling or learning you're not growing and you will be left behind.



## **Tess Todorova** Digital Prosthetic Sales Specialist

Tess began her career in the Dental Industry six years ago in Melbourne where she completed one-year study at Menzies Institute of Technologies. Tess started as a Dental Assistant in a very busy homeopathic dental practice and moved to fabricating mouth guards, bleaching trays and post ortho retainers in a clinical lab.

She moved to New Zealand in 2015 and took on a role in a busy Auckland dental surgery doing both chair-side assisting and managing the practices CAD/CAM systems. This involved producing same-day restorations in the form of crowns, inlays, and on-lays. In early 2019 she decided it was time for a new challenge that allowed her full time focus to be on the digital technology aspects of dentistry, that she is very passionate about, she joined the Henry Schein Connect Dental Team. Moving forward in dentistry, incorporating digital work-flows and applications will be an integral part of any innovative practice. Tess is confident Henry Schein has the products, expertise and support to partner with you to improve practice efficiency, which will in turn provide better returns on your time and equipment investment.

Seeing her customers business thrive and grow, whilst also knowing their patients are benefiting from a better experience, makes her job very rewarding. American author and businessman Stephen Covey says: *"There are three constants in life: change, choice and principles."*

Tess believes, whilst we live amongst constantly changing innovations, we need to make our choice and she is proud to deliver Henry Schein principles to our valued customers.

# Welcome to the Henry Schein Dental Equipment Catalogue

## Page Guide

<b>2</b>	<b>THE EQUIPMENT TEAM</b>		
<b>5</b>	<b>TREATMENT UNITS</b>		
	KaVo ESTETICA E30		
<b>6</b>	KaVo Primus 1058 Life		
<b>7</b>	KaVo ESTETICA E50 Life		
<b>9</b>	Morita Soaric		
<b>10</b>	Planmeca Compact i Range		
<b>12</b>	Planmeca Stand Alone Dental Chair		
<b>13</b>	Planmeca Clinic Management Solutions		
<b>14</b>	<b>STOOLS</b>		
	Dentifab Comfort Series		
	Morita OSJ-1 Operating Stool		
<b>15</b>	Planmeca Lumo & Olo		
	KaVo PHYSIO Evo		
<b>16</b>	<b>SUCTION</b>		
	Cattani SMART Series		
<b>17</b>	Durr Dental VS and VSA Systems		
<b>18</b>	<b>AIR COMPRESSORS</b>		
	Cattani Air Compressors		
<b>19</b>	Durr Dental Air Compressors		
<b>20</b>	<b>IMAGING &amp; X-RAY</b>		
	<b>Phosphor Plate Systems</b>		
	KaVo Scan eXam One		
	Air Techniques ScanX Duo		
<b>21</b>	Durr VistaScan Mini Range		
<b>22</b>	<b>Intraoral Camera/Sensors</b>		
	Planmeca Somia Camera		
	Planmeca ProSensor HD		
<b>23</b>	<b>Intraoral X-Ray</b>		
	KaVo FOCUS		
	Planmeca ProX		
<b>24</b>	<b>OPG</b>		
	Planmeca ProOne		
	Planmeca ProMax 2D - S2 and S3		
<b>25</b>	<b>Cone Beam</b>		
	KaVo OP3D		
	KaVo OP3D Pro		
<b>26</b>	KaVo i-CAT FLX		
	Morita Veraview X800		
<b>27</b>	Planmeca ProMax 3D Family		
<b>28</b>	Planmeca Romexis 6.0		
<b>29</b>	<b>MICROSCOPES</b>		
<b>30</b>	<b>INFECTION PREVENTION</b>		
<b>30</b>	<b>Instrument Sterilisation</b>		
	Mocom Supreme		
<b>31</b>	Mocom B Classic / B Futura		
<b>32</b>	SciCan STAT/IM		
	SciCan VistaCool 3		
<b>33</b>	<b>Washer Disinfectors</b>		
	SciCan HYDR/IM		
	Mocom Tethys H10		
<b>34</b>	<b>Cycle Monitoring / Biological Indicators</b>		
<b>35</b>	<b>Performance Testing / Process Indicators</b>		
<b>36</b>	<b>Ultrasonic Cleaners</b>		
<b>37</b>	<b>Detergents &amp; Disinfectants - Suction</b>		
<b>38</b>	<b>Detergents &amp; Disinfectants - Waterline</b>		
<b>39</b>	<b>Detergents &amp; Disinfectants - Surface</b>		
<b>40</b>	Radic8 Air Purification		
<b>42</b>	<b>CAD/CAM EQUIPMENT</b>		
	<b>Chairside Scanners</b>		
	Planmeca Emerald S		
	3Shape TRIOS		
	iTero Element		
<b>44</b>	<b>Model Scanners</b>		
	3Shape Redline E Scanners		
<b>46</b>	<b>3D PRINTERS</b>		
	Planmeca Creo C5		
	Asiga MAX		
<b>47</b>	<b>Milling Units</b>		
	Planmeca Planmill 30S		
<b>48</b>	VHF Series		
<b>49</b>	Roland DWX Series		
<b>50</b>	<b>Dust Collectors</b>		
	Renfert SILENT Range		
	Roland DentalPRO		
<b>51</b>	<b>CAD/CAM SOFTWARE</b>		
	Planmeca PlanCAD Easy		
	3Shape TRIOS Studio Apps		
<b>52</b>	3Shape Dental System – For the Laboratory		

# Treatment Units

## ESTETICA E30



### Dental Excellence at an affordable entry level price

Looking for an easy-to-use dental chair that offers you quality, reliability and efficiency? The KaVo E30 combines convenience and efficiency, clever technology and integrated service functions to ensure cost-efficient operation.



#### Swing Arm Version - Easy access to your handpieces

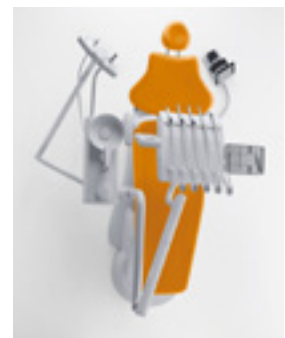
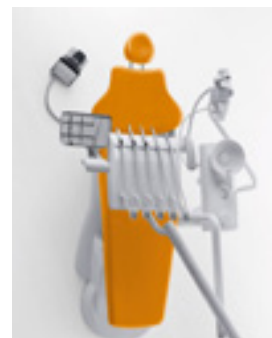
The perfectly balanced handpieces are immediately and safely positioned in your hand. The generous length of the handpiece tubing gives you the flexibility to position your dentist element where it is most convenient to you.

#### Fully ambidextrous right to left, and left to right convertible treatment unit.

Being left handed is always difficult where the world is made for right handed people. Therefore the KaVo ESTETICA E30 is designed as a treatment unit that is equally well suited for both sides. The unit can be switched easily in less than two minutes from left-to-right or right-to-left operation.

#### Table Version - Enjoy more personal space

The compact dentist element affords a good view of all available functions while offering freedom of movement for your individual treatment procedures and a healthy and natural posture.



# Treatment Units

## Primus 1058 Life

The Primus 1058 Life was designed with a major focus on functional reliability and economic efficiency - for today and tomorrow. Identify excellent value for money and join thousands of dentists throughout the world who report that their Primus 1058 Life "runs and runs and keeps on running".



### The Table Version

With the table element you can move more freely for perfect, ergonomic work in every treatment position.



### The Swing Arm Version

The handpiece instrument lies perfectly balanced in one's hand, while the special tubing guidance system and enclosed housing achieves simple, effective and hygienic infection prevention.



### The Cart Version

Take advantage of the additional mobility of the dentist element in cart version.



### COMPACT Chair

If you are looking for a comfortable treatment chair with reduced dimensions for your practice, the COMPACT chair option for your KaVo Primus 1058 is the answer. It may be tilted to make it more accessible for older patients.

It may also be moved from the 80°, upright sitting position into the supine position. Talk to your patients while they are seated, and then treat them while they are reclined.

Available in Table, Swing Arm and Cart versions.



# Treatment Units

## ESTETICA E50 Life



### Streamlined Efficiency

Your lifestyle bears your signature - continue this in your practice with your own concepts, preferences and expectations. Focus on the areas that are important to you and feel the support of a high-quality dental unit which optimally supports all your treatment procedures.

All variants of this treatment centre feature an integrated display and are easy and intuitive to operate. Even better, there's a new patient chair, camera, and software communication system.

#### Features and Options:

- Modern chair design with optimised softer upholstery
- Customise with the new RELAXline Soft Upholstery in Cashmere, Graphite or Agave
- Increased maximum patient weight up to 185kg
- Extended Highest/Lowest chair positions: 35cm - 83cm
- New and easy to use ERGOcam One intraoral camera
- Upgrade monitor available in 19" and 22"
- Very latest KaVo CONEXIO software system which allows you to control patient communication from the dentist element
- Integrate KaVo DIAGNOcam into the treatment unit
- Also available in knee brake COMPACT chair version



#### Every move is smooth.

The generous movement radius of the arm design allows for ideal positioning in any situation.

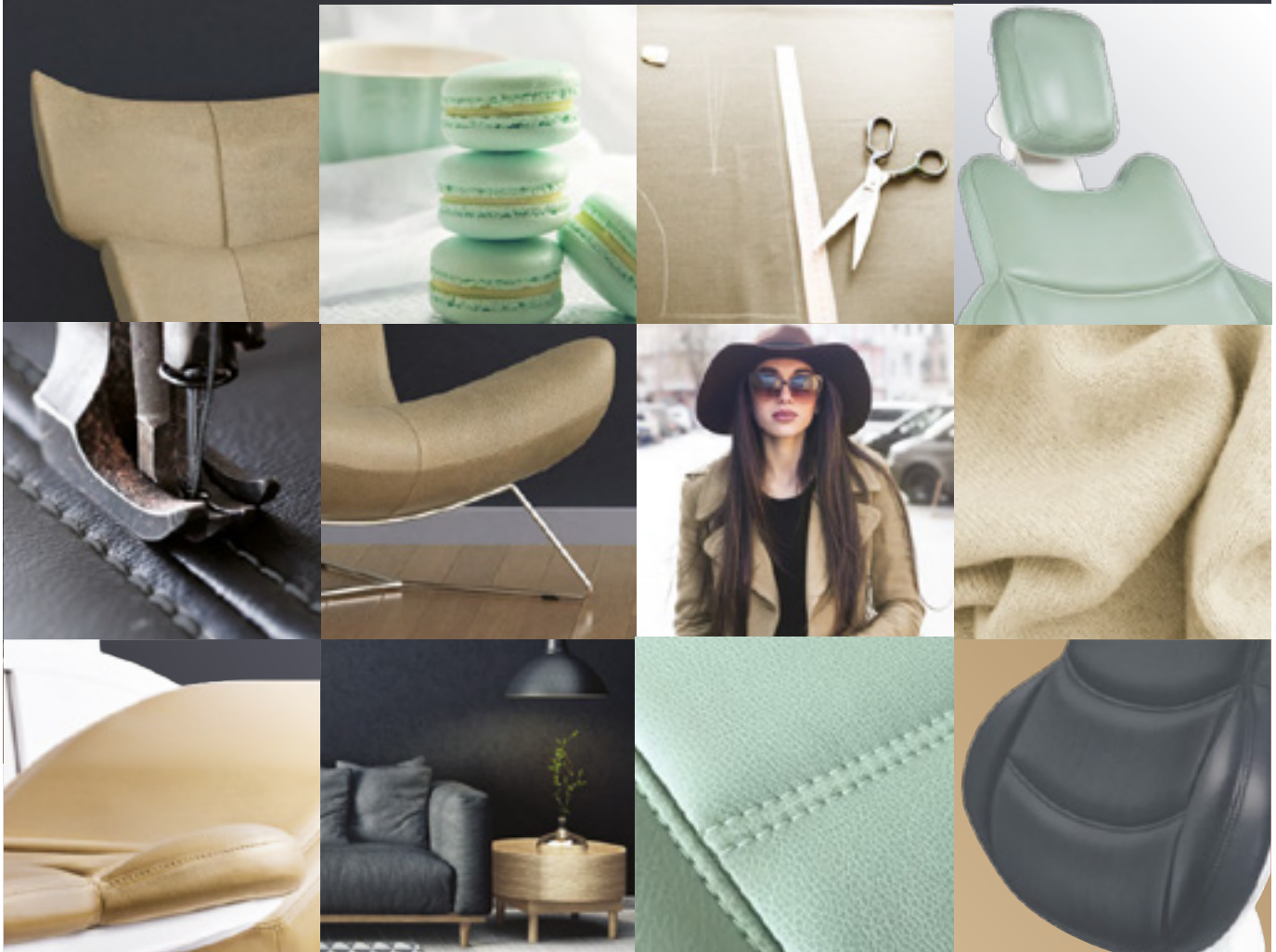
The intelligent tray support may be mounted on the right or left side of the table, while your tray may be moved both vertically and horizontally.

Benefit from the optimal ergonomics of the swing-arm version enabled by a low 45cm table height, while enjoying the flexibility provided by the 90cm maximum instrument hose extension.

**Enjoy optimal support for all treatment procedures.**



## KaVo RELAXline Soft Upholstery. Style meets softness.



Exclusive design — exceptional comfort.  
The new KaVo RELAXline Soft Upholstery.

Softness in its most attractive form.

- Soft upholstery made of memory foam and a leatherette cover
- Attractive, soft-cover that looks and feels like leather
- Cover is antimicrobial protection certified, in accordance with EPA regulations (United States Environmental Protection Agency)
- High-quality, hand-sewn designer stitching
- Exclusively manufactured by hand in Germany
- Available in three new colours — Graphite, Cashmere and Agave — exclusive to the KaVo RELAXline Soft Upholstery



# Treatment Units



## Soaric

Introducing the exceptional.

**The average gives the world its substance, the exceptional its value.**

The Soaric takes design and ergonomics a step beyond today's developments. This treatment unit offers unique possibilities that provide valuable support to both today's dental practice and future opportunities.

The modern and timeless design of Soaric, evident right down to the finest detail, underlines your efficiency and professionalism. At the same time, however, it also creates an atmosphere of trust and safety. This is achieved by the treatment unit's reduced and harmonious expression of form. After all, the more relaxed the patient, the more pleasant the treatment.



### Features:

- Flexible and intuitive operation guarantees optimum treatment process
- Minimum footprint with maximum movement area
- Maximum legroom
- Innovative instrument holders
- Precision height adjustment
- Patented instrument holder for maximum ergonomics and flexibility.
- Integrated microscope and a large number of new, innovative instruments for highly demanding odontology offers you the possibility of adapting the unit to suit your requirements
- Endodontics - Morita's strength. Soaric is fitted with special components for a comfortable treatment process
- Optimum LED lighting for precision treatment

### Built-in Cleaning System



### Dentist Element - Easy Cleaning



### Soaric with Microscope Option



# Treatment Units

## Compact i Classic

**PLANMECA**

The functional design of the Planmeca Compact™ i Classic supports smooth workflows and excellent working positions. It is an excellent choice for the needs of general dentistry and can be equipped with exactly the type of setup you prefer.

Although priced as an entry point unit there is no compromise on quality. The shared appearance and platform of the Compact i allows you to enjoy the core Planmeca ergonomics and quality that is so valued by the rapidly growing cohort of Planmeca owners.

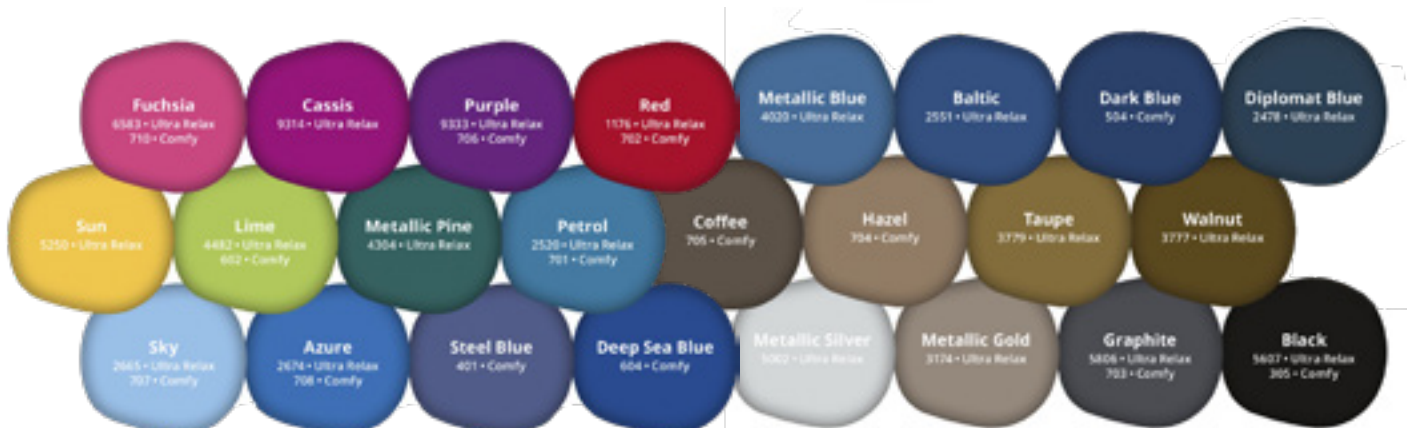
The Compact i Classic is your more traditional dental unit, with buttons to call and control programmable functions instead of graphic user interface.

### Features:

- All aluminium parts for ultimate durability
- Solanna Operating Light
- Mini Bright 6-Way LED Syringe
- Bien-Air MCX Electric Micromotor
- Built-In Instrument Purging
- Option to add Somia Intraoral Camera and/or Serenus 22" Monitor
- Upholstery available in 24 colour options in either standard or Ultra Relax



### 24 colour options in either standard or Ultra Relax



# Treatment Units

## Compact i5

PLANMECA

Planmeca Compact™ i design solutions support an ergonomic and smooth workflow. Extremely simple and intuitive, it makes your everyday work easy, pleasant and efficient – without compromise.

The Compact i5 dental unit has been built around five central themes – design, well being, cleanliness, intelligence, and evolution. All these principles are carried through in every detail of this unit resulting in a perfect combination of functionality, durability, comfort, safety, and distinctive aesthetics. It's a dental unit everyone dreams of!

The distinctive features of the Compact i5 have been created to stand the test of time, while its sleek design offers you the best possible workflow and your patients the most enjoyable treatment experience.

The practical infection prevention aspects are especially easy. All essential functions are neatly organised, integrated, automated, guided and recorded so a safer environment is guaranteed for both the dental team and your patients.

The rapidly changing world of dentistry sets new demands for dental clinics, especially when it comes to increasing efficiency and improving quality assurance practices. With that in mind Planmeca have come up with intelligent digital tools to help your practice stay ahead of the game. All Planmeca's digital equipment can be easily connected to a network in order to generate and store valuable patient data.

### Features:

- All aluminium parts for ultimate durability
- Solanna Operating Light
- Mini Bright 6-Way LED Syringe
- Bien-Air MCX Electric Micromotor
- EMS No Pain LED Scaler
- Built-In Instrument Purging
- Multi-function Foot Control
- Ultra-Relax Upholstery in 24 colour options
- Option to add Somia Intraoral Camera &/or Serenus 22" Monitor
- Optional CAD/CAM integration with Planmeca Emerald Scanner

Whether it's balanced or hanging tube, over the patient, under the patient side delivery or cart, the Compact i5 provides a high quality and space efficient unit from which to build your practice.



# Treatment Units

## Universal Chair Solutions

**PLANMECA**

The versatile, optimally designed features of the independent Planmecca Chair™ provide great working ergonomics. The dental chair is well-suited for surgical treatments and can also be equipped with a Planmecca mobile cart.



**Planmecca Stand Alone Chair** with knee break and 180 degree swivel. Option available with mounts for light and tray.

**Features:**

- Knee break as standard
- 180 degree chair rotation
- Option available with wheel kit
- Option available with light and tray



**Planmecca Stand Alone Cart** with the same feature set as the iTouch illustrated here with optional sterile saline supply.

**Features:**

- Same high quality instrumentation as standard units
- Endo MX2 Motor supplied as standard
- Large instrument tray



**Planmecca Solanna Vision Operating Light**, is renowned for its superior lighting features and easy operation. Just when you thought an operating light couldn't get any better!

**Features:**

- Ceiling, wall or unit mounted
- Two integrated 4K cameras
- Brightness and colour of your choice
- Easily take exceptional still images and videos

# Treatment Units

## Clinic Management Solutions

**PLANMECA**

Planmecca's Romexis Clinic Management Software provides an integrated solution to your Planmecca dental equipment management strategy.

### Clinic Management with Smart GUI App can be used to:

- Monitor the function and service health of your dental equipment
- Call for help or attention when a fault is detected
- Offer recording and monitoring of equipment for validation purposes
- Provide integrated manuals displayed on the surgery or chairs screen to aid staff on correct maintenance and care of equipment
- Provide a convenient path for keeping software up to date
- Provide a convenient path to program and update chair settings to best accommodate the clinicians needs

Planmecca are focused on developing their platform. The Planmecca GUI interface allows for new functionality to be programmed in and not limited to hard buttons.

Please ask to explore Planmecca's Clinic Management functions with your Equipment Consultant as to how this can assist you and your team's productivity in matters of dental equipment operation and maintenance within the practice.



Monitor and update your equipment's software, check frequency of maintenance and setup your equipment's functions.



Smart GUI interface, changing the way you can interact with your PC from the dental unit. Illustrated track pad function at the dental chair.



On screen manuals to aid staff in daily tasks ensuring correct use and maintenance to protect and get the best from your Planmecca equipment.

# Stools

## Comfort Series Assistant's Stools



Those who really desire all the ergonomic provisions will appreciate our Comfort Series Assistant's stools.

A height adjustable backrest tops off the features found on the Standard Series Assistant's stool.

The stool top also rotates independently of the backrest, which is ideal for leaning over, or for use as an armrest.

## Comfort Series Doctor's Stools



Providing the ultimate in ergonomic adjustments for the discerning specialist who requires precise positioning while seated.

Our Comfort Series Doctor's stools give independent seat base tilt adjustment, in addition to a full range of backrest positions.

Everything adjusts at the flick of a lever. "Freeflow mode" is also possible when the levers are raised to their highest position.

## OSJ-1 Operating Stool



Morita's primary design focus remains fixed on dental ergonomics and correct operating positions. Your BOP (Balanced Operating Position) is the key! The newest variation of Morita operating stools is where your balanced operating position starts and finishes. OSJ stools are specifically designed to promote the optimal natural position with perfect balance and comfort.

### Features:

- Ergonomic and functional design
- Promotes natural, upright posture
- Less stress on the spine and muscles
- Smooth operating transition
- Available in various upholstery colours



# Stools

## Lumo

A form that follows you.

**PLANMECA**



Our anatomically designed Planmeca Lumo™ dental stool provides outstanding support and comfort for users of all heights and sizes. The stool's distinguished design is in line with other Planmeca products. Planmeca Lumo is available in all Comfy™ and Ultra Relax™ upholstery colours - forming a perfect match with Planmeca dental units.

### Features:

- Enables smooth movement on all kinds of floors
- Height-adjustable backrest provides lower back support for users of all sizes
- Forward tilting seat minimises the strain and pressure on thighs
- Flexible seat slider provides more space for larger users
- When enabled, synchro backrest follows every move

## Olo

Gives your back the best position.

**PLANMECA**



Planmeca Olo™ saddle stool is the newest member of our stool selection. Planmeca Olo gives the back its most natural position during the treatment sessions. The height is easy to adjust for different users. The incomplete circle shape of the foot ring allows close proximity to patient and other stools when needed. The exceptional design of the seat features handles and the uniform design contributes to perfect infection prevention.

### Features:

- Natural position for your back
- Easy height adjustment for different users with the foot ring
- Optimally shaped foot ring enables close proximity to patient and other stools
- Adjustable seat angle for best possible working position
- Uniform design for perfect infection prevention
- Free rotating casters for smooth movement on all kinds of floors

## PHYSIO Evo

### KaVo dental stool: Perfect fit. Ergonomics meet design! It's all about your back!

For dentists, it is particularly important to assume a posture that is ergonomically healthy and comfortable in any treatment situation. And nothing influences your posture more than the work chair you use all day, every day.

Thanks to independent adjustment functions, the seat and backrest can be set individually to suit your anatomical requirements and personal treatment style.

The best-possible sitting comfort allows for the smoothest workflow.

- Perfect ergonomics with maximum comfort for healthy and fatigue-free working
- Perfectly finished KaVo quality for unrestricted reliability to complete the daily routines in your practice
- Attractive colours and a modern design recognised by the GOOD DESIGN AWARD
- Best hygiene thanks to precisely matched components with very small gaps and surfaces that are easy to clean

**Ergonomics and comfort in perfect harmony: with the KaVo PHYSIO Evo, you always sit with a healthy, natural posture.**

**KAVO**  
Dental Excellence



# Suction

## Cattani Suction Systems

### Micro SMART



#### Semi Wet Suction System for 1-2 Simultaneous Users.

Micro SMART is a semi wet suction system with inverter control for one to two surgeries. It is Cattani's most powerful suction system for its compact size. Their superior design, mechanical precision and robust components result in all SMART suction systems being backed by a 3-year parts and labour warranty.

### Turbo SMART



#### Semi Wet Suction System for 2 - 20 Simultaneous Users.

Turbo SMART is a semi wet suction system with INVERTER control. It is our most versatile suction system known for its consistent high performance and can be supplied in many configurations to suit your suction requirements. Their superior design, mechanical precision and robust components result in all SMART suction systems being backed by a 3-year parts and labour warranty.

### Micro SMART CUBE



#### Semi Wet Suction System for 1 - 2 Simultaneous Users with Integrated Acoustic Cover.

### Turbo SMART CUBE A



#### Semi Wet Suction System for 2 - 3 Simultaneous Users with Integrated Acoustic Cover.

### Turbo SMART CUBE B



#### Semi Wet Suction System for up to 4 Simultaneous Users with Integrated Acoustic Cover.

Turbo SMART CUBE is a semi wet suction system with INVERTER control for one to two surgeries. It is our most powerful suction system for its compact size. Their superior design, mechanical precision and robust components result in all SMART suction systems being backed by a 3-year parts and labour warranty, but now with an acoustic cover it's even quieter.



# Suction

## Durr Suction Systems

### VS Systems

#### VS 300 S



For one operator and two treatment rooms.

#### VS 600



For two operators and three treatment rooms.

#### VS 900 S



For three operators and five treatment rooms.

## VSA Systems

#### VSA 300 S



For one operator and two treatment rooms.

#### VSA 600 S



For two operators and three treatment rooms.

#### VSA 900 S



For three operators and five treatment rooms.

# Air Compressors

## Cattani Air Compressors



### A Compressor for Every Occasion.

The compressor is among the most important pieces of equipment in the dental surgery, the success of a clinic is dependent not only upon the reliability of the compressor, but the quality the air compressor supplies. Superior performance and precision design have made Cattani air compressors a market leader.

With Cattani's extensive range the right compressor can be chosen to meet any practice requirements. All units can be supplied with an acoustic hood, reducing noise levels by approximately 10 dB(A). The AC100, AC200 and AC300 are available with an acoustic cover, guaranteeing noise level reduction of 20 dB(A), making them almost silent.

### AC-100



Recommended for 1 surgery  
Flow 67.5 NI/min  
Power 1 ph 240 V 3.8 A 0.55 kW  
Receiver 30 l  
Sound 70 dB(A)  
Weight 47 kg  
Dimensions H=720 W=620 D=460

### AC-200



Recommended for 2-3 surgeries  
Flow 160 NI/min  
Power 1 ph 240 V 7.1 A 1.25 kW  
Receiver 30 l  
Sound 71 dB(A)  
Weight 54 kg  
Dimensions H=720 W=620 D=460

### AC-300



Recommended for 3-4 surgeries  
Flow 238 NI/min  
Power 1 ph 240 V 9.2 A 1.5 kW  
Receiver 45 l  
Sound 73.6 dB(A)  
Weight 64 kg  
Dimensions H=750 W=620 D=520

### AC-400 & AC4001P



Recommended for 5-6 surgeries  
Flow 320 NI/min  
Power 1 ph 240 V 15.4 A 2.4 kW  
3 ph 400 V 7.2 A 3.0 kW  
Receiver 100 l  
Sound 73 dB(A)  
Weight 112 kg  
Dimensions H=745 W=1155 D=550

# Air Compressors



## Durr Dental Air Compressors

- Membrane drying unit for continuous performance without regeneration time
- Modern motor concept for highest precision and running smoothness
- Reliable and long-lasting technology, designed for continuous operation
- Models for single users through to hundreds of users (hospitals, teaching clinics and government)
- Tandem models for trouble free upgrades with growing performance requirements
- Anti-bacterial inner tank coating and sterile filter for absolute freedom from germs
- Made in Germany

### Duo

- The classic of the compact compressors with 2-cylinders - oil free
- 20L tank capacity
- Dimensions (H x W x D)  
64 x 49 x 44cm
- Weight: 47kg
- Membrane dryer technology for continuous compressor operation
- For maximum 2 treatment units working simultaneously



### Trio

- Economical high power compressor with three cylinders - oil free
- 50L tank capacity
- Dimensions (H x W x D)  
76 x 74 x 52cm
- Weight: 70kg
- Includes membrane dryer technology
- For 3 treatment units working simultaneously



### Quattro

- Powerful four cylinder compressor - oil free
- 50L tank capacity
- Dimensions (H x W x D)  
76 x 74 x 72cm
- Weight: 82kg
- With membrane dryer
- For 4 treatment units working simultaneously



### Duo Tandem

- Gives you flexibility for a growing practice
- 50L tank capacity including membrane dryer
- Will work with 1 motor to run 2 treatment units
- Can add another motor later so you can run 4 treatment units
- Dimensions (H x W x D)  
76 x 79 x 52cm
- Weight: maximum 90kg with 2 motors



### Quattro Tandem

- Very powerful for dental labs and large surgeries
- 90L tank with 1 or 2 membrane dryers
- Can be ordered with 1 aggregate or 2
- Will operate up to 10 treatment units working simultaneously
- Dimensions (H x W x D)  
76 x 102 x 62cm
- Weight: maximum 143kg with 2 aggregates/2 membrane dryers



# Imaging & X-Ray

## Phosphor Plate Systems

### Scan eXam One



The KaVo Scan eXam One requires little space and looks great!

Advanced digital image processing provides consistent images time after time. Excellent image quality can be achieved using the factory configurations, these can also be adjusted easily according to the dentist's diagnostic preferences.

Clear and sharp KaVo Scan eXam One intraoral images reproduce grey-levels accurately to show the required diagnosis.

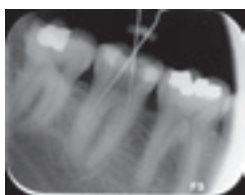
The Scan eXam One is a perfect choice as your personal chairside X-ray imaging solution, or it can be easily shared with multiple users in a network.

#### Features:

- Easy to operate
- Superb results in an instant
- Chairside or shared use

Multiple Plate Sizes Available

Cliniview Software



### KaVo Plates and Accessories

#### IDOT Plates pkt 6

PA1-900483 Size 0  
PA1-900484 Size 1  
PA1-900485 Size 2  
PA1-900486 Size 3

#### Hygiene Bags pkt 200

PA1-900475 Size 0  
PA1-900476 Size 1  
PA1-900477 Size 2  
PA1-900478 Size 3

#### Standard Plates pkt 6

PA1-900479 Size 0  
PA1-900480 Size 1  
PA1-900481 Size 2  
PA1-900482 Size 3

#### Protective Covers pkt 200

PA1-900487 Size 0  
PA1-900488 Size 1  
PA1-900489 Size 2  
PA1-900490 Size 3

### ScanX Duo



See More, Show More with ScanX Digital Radiography



ScanX Duo Digital Radiography System delivers chairside, crystal clear images in seconds. This small and efficient two track system is capable of reading images simultaneously from 2 PSPs.

#### Features:

- ScanX delivers crisp, sharp images in up to 18 lp/mm true resolution, meeting the needs of all diagnostic requirements.
- Capture all areas of your patient's anatomy thanks to ScanX PSPs that have a 100% active surface area. This means you capture up to nearly 40% more anatomy than with the comparable sized wired sensor.
- Once a PSP has been inserted into ScanX, the sharp, crisp image appears on your screen in seconds.
- Your digital images are ready to be reviewed, shared, archived or emailed.
- Solid metal construction for long life of unit

### ScanX Plates and Accessories

#### Phosphor Plates

AT-734450 PSP Size 0 (Qty 2)  
AT-734451 PSP Size 1 (Qty 2)  
AT-734452 PSP Size 2 (Qty 4)  
AT-734453 PSP Size 3 (Qty 2)  
AT-734454 PSP Size 4 (Qty 1)  
AT-73578-6 PSP 15cm x 30cm (Qty 1)

#### Barrier Envelopes for Phosphor Plates

AT-732480 Barrier Envelopes - Size 0 (Qty 100)  
AT-732481 Barrier Envelopes - Size 1 (Qty 100)  
AT-732482 Barrier Envelopes - Size 2 (Qty 300)  
AT-732483 Barrier Envelopes - Size 3 (Qty 100)  
AT-732484 Barrier Envelopes - Size 4 (Qty 50)

# Imaging & X-Ray

## VistaScan Mini Plus

Compact without compromise. Made in Germany.



**No compromises on image quality** - Thanks to PCS technology, VistaScan Mini can reliably resolve caries D1 lesions and endo instruments down to ISO 06. With 22 LP/mm, 16-bit (65.536) grey scales.

**No compromises on simplicity** - Particularly easy handling: read out, delete and make ready for the next use in one step. Rapid image availability from 6 seconds, in the direct vicinity of the patient.

**No compromises on integration** - VistaScan Mini can be operated with DBSWIN or other software packages via plug-ins or Twain drivers. It can be easily integrated into the surgery infrastructure via the USB or network interface.

**No compromises on flexibility** - All intraoral image plates – from size 0 to 4 – can be used with VistaScan Mini. In addition, 100% active surface area is available.

## VistaScan Mini View

X-Ray without compromise.



The VistaScan Mini View offer all the benefits of the Mini Plus but with the addition of its large touchscreen providing an easy-to-use user interface. The VistaScan Mini View image plate scanner processes all intraoral formats with the highest image quality. Thanks to its compact design it is ideal for chairside use. A sophisticated operating concept makes handling particularly simple. The VistaScan Mini View is easily integrated to surgery PCs via USB or network.

## Durr Dental Plates & Accessories



### Plates

DU-213004050	Size 0- 2 x 3 (22 x 35 mm - 2 Plates)
DU-213004150	Size 1- 2 x 4 (24 x 40 mm - 2 Plates)
DU-213004250	Size 2- 3 x 4 (31 x 41 mm - 4 Plates)
DU-213004350	Size 3- 2.7 x 5.4 (2 Plates)
DU-213004450	Size 4- 5.7 x 7.6 (1 Plate)

### Light Protection Covers

DU-213008000	Size 0 Pkt 100
DU-213008100	Size 1 Pkt 100
DU-213008200	Size 2 Pkt 300
DU-213008255	Size 2 Pkt 1000
DU-213008300	Size 3 Pkt 100
DU-213008400	Size 4 Pkt 100

### Image Plate Cleaning Wipes

DU-CCB351B1001	Pack of 10
----------------	------------

## Intraoral Camera

### Somia

**PLANMECA**



This camera's live video and temporary image freezing functions are optimal features for a quick explanation to your patients. As such, the Planmeca Somia helps dental professionals with patient communication and motivation, as well as treatment documentation. The freezing and saving of images can also be done from the foot control, so hands can be left free for positioning the camera. The macro mode allows for extremely close-up images, which can quickly be saved to the patient database in Planmeca Romexis.

The Somia can be mounted on the dentist instrument console or on the assistant-side Flexy holder, whichever best suits the user. After use, the camera is cleaned by simply removing the hygienic cover and wiping the device with a disinfectant wipe.

## Sensors

### ProSensor HD

**PLANMECA**

An intraoral sensor that uniquely combines patient-centric design with usability and durability.

With its three sensor sizes (0, 1 and 2) the Planmeca ProSensor makes no compromises when it comes to usability. The magnetic connector between the sensor and the control box ensures the sensor is always correctly inserted and connected with only one hand. Additionally, if the patient moves drastically the magnetic couple is instantly released.

The sensor cable is strengthened with Kevlar and only has two wires – its extreme durability has been proven in comprehensive testing, and the sensor head hermetically sealed can be immersed in disinfectant for infection prevention.

With terrific resolution, choice of USB or Ethernet connection, comfortable rounded sensor shapes and intelligent LED indicators, the ProSensor is an easy choice for your practice and integrates seamlessly with the expandable series of Romexis x-ray diagnostic and restorative software modalities (TWAIN for connection to other programs available).

#### Features:

- Outstanding image quality for sharp, low noise and high resolution images
- Can be integrated with Planmeca ProX X-ray
- Work productively with Planmeca Romexis Software
- Magnetic connector for ease of use
- Fully compatible with Windows and Mac OS



# Imaging & X-Ray

## Intraoral X-Ray

### FOCUS

FOCUS x-ray with anti-drift mechanism is a premium quality high frequency intraoral DC unit. It positions smoothly with just one hand, and the movement stops when you want it to stop.

#### Features:

- Exceptional stability
- Smooth movements
- Anti-drift mechanism (ADM)
- Long reach arm
- Accurate and reliable exposures
- Dose monitoring



**KAVO**  
Dental Excellence

### ProX

**PLANMECA**

An advanced intraoral X-ray unit that provides easy and precise positioning with a straightforward imaging process and top quality images in high resolution.

The ProX adapts to both short and long cone imaging techniques and for additional radiation control can be optionally fitted with a range of rectangular collimators.

The steady x-ray arm provides accurate and drift free positioning and can be mounted in a variety of modalities including; wall, Planmeca unit mounted, mobile and single fixed post to accommodate a wide range of clinical design needs.

When selecting Planmeca ProX with Planmeca ProSensor HD the Planmeca sensor integrates with the x-ray arm for an ergonomic and practical solution.

#### Features:

- Optimal images for all diagnostic needs; variable kV and mA
- Quick and easy to use; preprogrammed quick settings
- Digital ready
- Integration with ProSensor
- Smooth workflows with Romexis
- Versatile installation options



## OPG

### ProOne

### PLANMECA

Over 100 Planmeca ProOne's in use throughout New Zealand.



The ProOne® is Planmeca's full-featured panoramic imaging unit. It has been designed with simplicity in mind and features several cutting-edge innovations – combining extensive diagnostic capabilities and superior image quality into a compact, easy-to-use package.

This award winning Panoramic machine boasts Planmeca's renowned compact design and innovative features. A logically presented colour graphic user display to guide use and autofocus for a perfect panoramic image every time. The Planmeca ProOne also supports easy patient positioning both seated and standing with alignment made easy with laser beams.

With the variety of imaging programs and exposure formats to minimise patient dose, the ProOne is a well rounded and sensible choice to meet the needs of the general dentistry practice.

#### Features:

- Easy patient positioning
- Work with an unrestricted view of your patient
- The clear graphical user interface provides guidance
- Laser assisted patient positioning
- Autofocus feature for perfect panoramic exposures every time

### ProMax 2D - S2 and S3

### PLANMECA



#### Planmeca ProMax 2D S2

The two-joint (SCARA2) model with basic programs for:

- Panoramic imaging
- Cephalometric imaging, scanning
- Extraoral bitewing
- TMJ imaging
- Sinus imaging
- Child mode
- Robotic technology, two-joint model (SCARA2)

#### Planmeca ProMax 2D S3

- Cephalometric imaging, scanning
- Cephalometric imaging, one-shot
- True extraoral bitewing
- TMJ imaging
- Sinus imaging
- Tomographic imaging
- Child mode
- Autofocus
- 3D upgradeability
- Robotic technology, three-joint model (SCARA3)

Planmeca ProMax 2D are complete units for maxillofacial imaging. The units are capable of fulfilling even the most demanding needs of modern-day panoramic dental imaging, and come in two differing models to meet the specific needs of your practice – S3 for all imaging needs or S2 for basic imaging.

The ProMax 2D has been designed with upgradeability in mind. Whether you are upgrading your 2D unit to 3D or adding a cephalometric arm, Planmeca has the right solution for you.



# Imaging & X-Ray

## Cone Beam

### OP3D



#### Award winning innovations for panoramic, cephalometric and 3D imaging

The KaVo OP 3D makes choosing your X-ray system simple. It is a complete X-ray platform that provides easy-to-use features throughout the entire dental imaging workflow. With its versatile imaging programs and intuitive user interface, the KaVo OP 3D in its different configurations offers imaging excellence to users of any dental speciality.

#### Panoramic

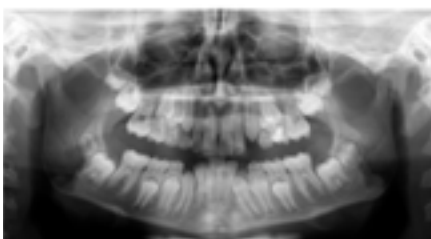
- Fast Scan - 2D panoramic imaging in just 9 seconds
- ORTHOfocus feature for providing the optimum panoramic image layer automatically

#### Cephalometric

- Innovative and patented ORTHOceph Plus design with fast cephalometric imaging scan times and adjustable field sizes for perfect image quality with minimal dose.

#### 3D

- 4 resolutions for 3D (Low Dose Technology (LDT), Standard, High, and Endo) combined with Metal Artefact Reduction (MAR) technology
- 4 predefined volumes: 5 x 5, 6 x 9, 9 x 11 and (optional) 9 x 14 cm - thanks to SMARTVIEW™ 2.0 the volumes are freely positionable and height adjustable in 5 mm steps between 5 and 9 cm before the exposure, leading up to 36 possible FOV sizes in total.



### OP3D Pro



#### The Most Comprehensive 3-in-1 for the entire maxillofacial region

The OP 3D Pro encapsulates the 50-year heritage of a legendary product family. It uses the latest in 3D and 2D technologies, for your benefit. The modern 3-in-1 platform's flawless design and versatility set the benchmark for whole maxillofacial imaging. This is the unit for all your needs with Low Dose Technology and five volume sizes.

#### Highlights:

- 2D / 3D Combo device upgradeable with Ceph
- Very low radiation doses with Low Dose Technology (LDT)
- Maximum flexibility with 5 volume sizes up to 13 x 15cm FOV and 4 resolutions
- Ability to compensate for incorrect patient positioning and difficult anatomies with multilayer feature providing five panoramic images with only one scan
- Automatically obtaining the most optimum panoramic image layer with ORTHOfocus™
- Simple, intuitive operation thanks to the new touch panel user interface

5 X 5 FOV    6 X 8 FOV    8 X 8 FOV    8 X 15 FOV    13 X 15 FOV



# Imaging & X-Ray

## i-CAT FLX



i-CAT FLX is widely regarded as the industry standard in cone beam technology, and allows you to choose a balance between image quality and dose control.

### Features:

- High resolution volumetric images, with flexible scanning options to control radiation dose
- QuickScan+ provides lower dose scan options
- Easy to use touch-screen interface
- Clinically driven image and exposure control
- Comprehensive treatment planning software included
- Fields of View Available: (D x H) 8 x 8cm, 16 x 4cm, 16 x 6cm, 16 x 8cm, 16 x 10cm, 16 x 11cm, 16 x 13cm and 17 x 23cm



## Veraview X800



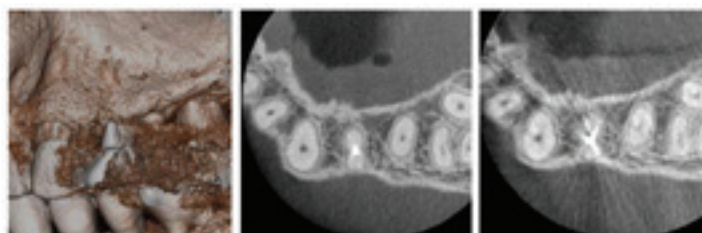
Revolutionary design and image quality.



Introducing our newest X-ray generation of the Veraview series: the new Veraview X800. The winner of the iF Design Gold Award is characterised by an inspirational design as well as outstanding image quality. Accordingly, the 2D/3D X-ray unit Veraview X800 provides superior diagnostics for dentists and safety for patients. The incredible attention to detail, groundbreaking resolution of more than 2.5 LP/mm MTF and a voxel size of 80 µm are reflected not only in the image quality but also in the range of features. The revolutionary integrated zoom reconstruction enables reconstruction of larger scans with an 80 µm voxel size.

### Features:

- Extra-sharp images
- Minimal artifacts
- Eleven fields of view
- Sharp panoramic images
- Face-to-face design
- Reduced doses
- Partial cephalometric images
- Network integration



## ProMax 3D Family

**PLANMECA**

Planmeca ProMax® 3D is a product family consisting of exceptional all-in-one units. With three different types of three-dimensional imaging - as well as panoramic, extraoral bitewing and cephalometric imaging, these intelligent products can meet all your maxillofacial imaging needs.

Planmeca is the first company to combine three different types of 3D data with one X-ray unit. The Planmeca ProMax® 3D family brings together a Cone Beam Computed Tomography (CBCT) image, 3D face photo and 3D model scan into one 3D image - using the same advanced software. This 3D combination creates a virtual patient in 3D, helping you with all your clinical needs.

Planmeca ProMax® 3D units offer a unique Planmeca Ultra Low Dose™ imaging protocol, enabling CBCT imaging with an even lower patient radiation dose than standard 2D panoramic imaging.



### Planmeca ProMax® 3D s

An entry-level CBCT unit for capturing small details – perfect for single implant, endodontic, and wisdom tooth cases.



### Planmeca ProMax® 3D Classic

Provides a clear view of the mandible and maxilla, as the unit's imaging sensor covers the entire dentition.



### Planmeca ProMax® 3D Plus

A great choice for capturing more than just the dentition, with an extended variety of volume sizes available.



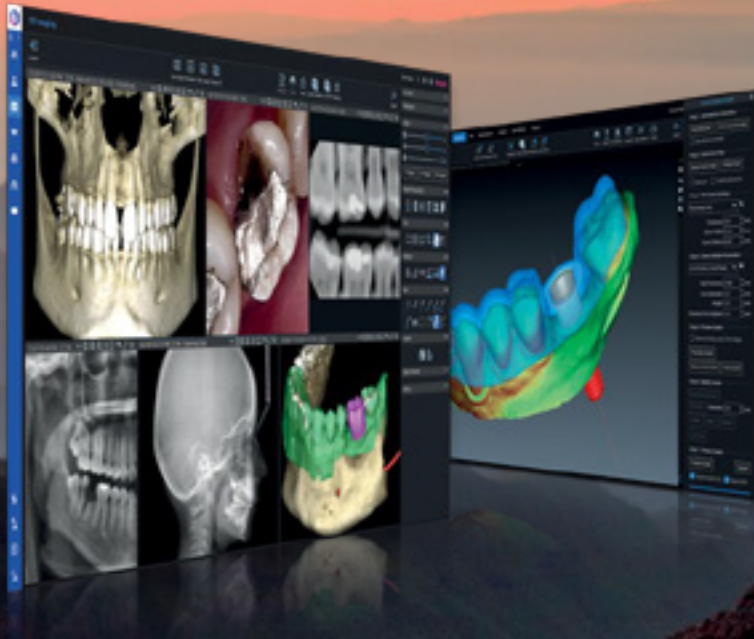
### Planmeca ProMax® 3D Mid

With a wide volume size selection, this 3D imaging unit is most suitable for e.g. ENT imaging and 3D orthodontics.

# FREEDOM

## NAVIGATE YOUR WORK IN A WHOLE NEW WAY

**Planmeca Romexis® 6** features a new modern look with a focus on efficiency, fewer clicks, and a customisable, intuitive user interface that guides users through tasks and workflow.



### All-in-one software featuring:

- Single image browser
- Customisable user interface
- Workflow wizards
- Floating windows
- Super connectivity

**Romexis**  
makes your work flow



A couple of years ago, Planmeca carried out a global project to learn what their current **Planmeca Romexis®** users value most. As a result, they are thrilled to introduce Romexis 6.0 – the new, award winning version of their world-leading dental software.

### Planmeca Romexis 6.0 offers:

- Enhanced user interface utilises colour to draw attention to important elements on the page
- New light and dark mode offers improved contrast when reading radiographic images
- A single image browser for all patient data including images, x-rays, videos, CAD/CAM files, PDFs and more
- Super connectivity with a centralised database and Dental PACS
- Workflow Wizards – an industry first! This tool takes the guesswork out of complicated tasks such as implant planning!

# Microscopes



Introducing a  
new breed of  
dental microscopes

OMS  
2380

MICROSCOPE

Combining a unique set of features and specifications, the new 2380 Zumax is a game changer in the dental microscope market.

With German optics, large fine focusing range and wireless foot pedal the Zumax 2380 brings an unprecedented level of comfort and high performance to your practice.

The specifications and price will surprise you



German  
Optics



iPhone and Android  
integration available



Pendulum  
arm function



Floor, wall and ceiling  
options available

Now EVERY dentist can have a microscope

# Supreme

50 Sterilisation cycles with  
just 5 Litres of tap water



B Classic



B Futura

## Autoclave Range

For over thirty years safety, reliability and innovation have been the guiding principles behind all aspects of design and production at Mocom, the worlds leading sterilisation Manufacturer.

Mocom developed the first closed-loop steriliser that uses mains water through a specific internal filtration system that recycles water to be used in following cycles.

This performance eliminates waste, reduces costs and ensures a significant increase in the efficiency of any modern dental surgery. It also solves the issue of supplying demineralised water.

# Infection Prevention

## Instrument Sterilisation

### B Classic



The B Classic was designed to make work easier by optimising time and costs. Exceptional quality and practicality ensure exceptional safety and reliability.

Easy to use, the B Classic provides full traceability of every single sterilisation cycle. Available in three chamber sizes - 17L, 22L and 28L. All sizes have the same overall machine dimensions and feature a monochromatic LCD display and keypad.

#### Features

- LCD display with keypad and test reminder
- Performance vacuum pump
- Built-in water conductivity sensor
- Optional barcode and cycle report printer
- Wifi and Ethernet port comes standard

**Now with a 3 year or 3000 cycle warranty.**

### Traceability software

MyTrace is Cefla's traceability software available for all Mocom sterilisers. By using this program, each set of sterilised instruments can be associated to the patient through a bar code. This essential software completes the sterilisation process and provides legal protection to dentists.

#### Di.V.A.

Di.V.A. stands for Digital Virtual Assistant. It is the first cloud-based control and traceability system for Mocom sterilisation devices. Once saved, data will be available for operators by accessing a dedicated web page.



### B Futura



B Futura is an intelligent steriliser, destined to be an indispensable work tool. A high performance and user-friendly product.

Mocom developed **the first steriliser that uses mains water** via a unique internal filtration system. This world-first process helps to eliminate waste and water storage, reducing costs and increasing the efficiency and ease of operation of any steri room. Equipped with advanced connectivity and traceability systems.

Available in three chamber sizes - 17L, 22L and 28L. All sizes have the same overall machine dimensions.

#### Features

- 4.3 inch colour touch display
- Heavy-duty vacuum pump
- Optional barcode and cycle report printer
- Wifi and Ethernet port comes standard
- Built-in water conductivity sensor

**Now with a 3 year or 3000 cycle warranty.**

### Barcode and Report Printers



The sterilisation portfolio can be completed with a connection to dedicated printers which provide the user with a paper copy of the relative parameters at the end of the sterilisation cycle. Users can also produce bar code labels to identify sterilised materials.

### Barcode Scanner

To help trace instruments within your practice assigning barcode labels to patients.

Available for use with the Mocom Barcode Printer, the scanner comes with a stand for hands free use.



# Infection Prevention

## STAT//M G4 Steriliser

Experience the STAT//M G4 Difference

**COLTENE**

SciCan



STAT//M 5000



STAT//M 2000

Gentle on your instruments due to its patented steam process and relied upon by the busiest of practices.

The STAT//M family comprises the fastest, most innovative cassette autoclaves available on the market today and has been designed to meet the needs of any size practice.

### Fast

**STAT//M G4 is the fastest cassette steriliser from start to sterile.**

- Using only a small amount of water for each cycle, the STAT//M heats and converts to steam in mere seconds.
- The innovative design of STAT//M's fully removable chamber allows for quick heating and cooling.
- A complete solution: rapid sterilisation with rapid drying via the STAT//M Dri-Tec technology.

### Smart

**Wifi enabled G4 Technology - information at your fingertips.**

- WiFi enabled G4 technology can connect and send cycle data to your smart devices or computer, allowing staff to focus on the

most important thing in a dental practice, the patients.

- Maintenance reminders, instructions and the option for automatic software updates keep your STAT//M in good working order.
- G4 technology connects your STAT//M to specialised technicians, which allows for remote support and minimises unnecessary downtime.

### Reliable

**For over 25 years, STAT//M's speed, reliability and dependability have made it the ideal steriliser for every practice.**

- Whether as a stand-alone product or in combination with the Chamber Steriliser, dentists rely on STAT//M for fast and efficient instrument turnaround.

## VistaCool™ 3

Direct-to-Drain Thermal Reduction System for Autoclave Wastewater



### Kiss your condenser bottles goodbye with VistaCool 3

The only direct-to-drain system designed from the ground up for your STAT//M 2000 and 5000 cassette sterilisers. VistaCool eliminates the need for autoclave condenser bottles by cooling steriliser wastewater and sending it directly down the drain.

### Protects Cabinets

Helps prevent mold, mildew, rot and rust caused by spills and humid environments created by exhaust from condenser bottles.

### Protects Staff

Eliminates the need for office staff to empty hot water bottles manually.

### Protects Drains

Prevents autoclave wastewater from damaging plumbing. Built-in backflow prevention meets or exceeds local plumbing codes.

### Saves Time

Non-electric, self-regulating system saves staff time – there's no user maintenance required!



# Infection Prevention

## Washer Disinfectors

### HYDR/M C61W G4 Instrument Washer

**COLTENE**

**SciCan**

Automated Instrument Washing – the first step in the sterilisation process!

The HYDR/M ensures instruments are properly and consistently cleaned before moving to the next step in the process.

**Features:**

- Countertop or under the counter, steri-center installation
- G4 web portal includes data storage, service logs and remote access capabilities
- Validated cycles to ensure repeatable washing performance
- Improved serviceability, reliability and minimal maintenance requirements
- Vivid colour touch screen
- Robust stainless steel exterior
- USB port for data storage
- Active hot air drying



### Tethys H10 Hybrid Disinfection Device

Decontamination, washing, thermal disinfection and drying all performed in one cycle!

**mocom**  
STERILISATION FIRST

The Tethys H10 Hybrid Disinfection Device expands the traditional role of the thermal washer disinfecter, adding ultrasonic cleaning as an initial step and delivering instruments dry and ready for packaging and sterilisation at the end of a 35-minute cycle. One cycle eliminates all operator risk - keeping your team safer.

**Features:**

- Fast 35 minute cycle
- Thermal disinfection, ultrasound and drying in one device
- User-friendly colour touch screen operation
- Internal memory as well as USB and Ethernet connectivity for paperless record keeping



# Infection Prevention

## Cycle Monitoring

### Multi Parameter Indicators - Class 4, 5, 6.

For machines without recording capabilities.

### Comply™ SteriGage®



Class 5 Steam Chemical Integrators

- Use for pack control monitoring of all 118-138°C (245-280°F) steam sterilisation cycles.

### Comply™



Class 4 Steam Indicator Strips

- For use in determining whether the sterilisation process conditions were met inside each pack.
- Can be used in all 121 -134°C (250-273°F) sterilisation cycles.

### STEAMPlus™



Class 5 Integrators

- Used with steam sterilisation cycles to provide a definitive pass or fail result - allowing for the release of all non-implant loads before the results of the spore test are received.
- Moving-front technology provides an immediate readout for use in gravity, prevacuum, and flash cycles.
- Enhance sterility assurance by monitoring steriliser performance.

### Sterintech Emulator



Used to show the heat parameters for sterilisation have been achieved.  
Class 6 Indicator

## Biological Indicators

To be used as part of the Validation process. (Only required annually if fully validated process is implemented)

### Attest™ Biological Indicators



- PCD: Monitoring 250°F/121°C gravity and 270°F/132°C vacuum-assisted steam sterilisation processes.



- PCD: Use the Attest 1261 Biological Indicator to monitor 270°F (132°C) gravity displacement steam sterilisation cycles.

### Attest™ Steam Incubator



- 3M Attest Incubator that provides optimal incubation conditions for the accurate readout of 3M™ Attest™ Biological Indicators.

# Infection Prevention

## Performance Testing

**Air Removal and Steam Penetration Tests.** An Air Removal Test is required each morning before processing of your first load.

### Helix Test Device



Air Removal Device

- Reads on completion of the cycle to ensure that your Type B table top steriliser is performing correctly. Has the capability to provide you with effectively sterilised items in your practice.



### Bowie Dick Helix Test Set



Air Removal Device

- Conforms to ISO 11140 - 1 class 2 – EN 867 part 5 class B
- Indicator marked with red printing for identification
- Clear transition of colour to pink
- Easy to interpret - easy to document
- Non-Toxic / Lead-free.



### TST Helix Test Device

Browne

Air Removal Device

- The Browne TST Control Helix is a Hollow Load Process Challenge Device (PCD) and has been developed and validated for testing the air removal (steam penetration) capability of small Type B steam sterilisers.



### Statim Quad Helix Device\*

SciCan

Air Removal Device

- This process challenge device has been designed as a monitoring device for use within a specific cycle, HOLLOW / WRAPPED (S) 134°C 3.5 min.



\*For use only with the Statim Sterilisers.  
Device included with purchase of machine.

All performance testing devices shown above include Class 2 chemical indicators.

## Process Indicators

Visual indication that load has been processed only.

### Two Line Label Gun with Steam Indicator



The Sterintech two line label gun is reliable, easy to use and durable. The combination of a double label gun label and normal tape is a more cost-effective solution than steam tapes only.

### IMS Autoclave Tape



How the best perform



Strong tape that can be written on and visually differentiates processed from non-processed cassettes.

## Ultrasonic Cleaners

### BioSonic Ultrasonic Cleaning System



#### UC50DB\*

##### Ultrasonic Cleaning System with Basket

Tank Capacity 3.2 litres  
 Fill Capacity 2.0 litres  
 Overall Dimensions (l x w x h)  
 27.3 x 21.9 x 20.3 cm  
 Tank Dimensions (l x w x d)  
 19.7 x 14.6 x 10.5 cm



#### UC125\*

##### Ultrasonic Cleaning System With Basket

Tank Capacity 4.8 litres  
 Fill Capacity 3.8 litres  
 Overall Dimensions (l x w x h)  
 42 x 26.7 x 35 cm  
 Tank Dimensions (l x w x d)  
 28.6 x 14.3 x 12.7 cm



#### UC300\*

##### Ultrasonic Cleaning System

Tank Capacity 14.4 litres  
 Fill Capacity 11 litres  
 Overall Dimensions (l x w x h)  
 48.2 x 30.5 x 31.1 cm  
 Tank Dimensions (l x w x d)  
 35.6 x 22.9 x 17.1 cm



\*2 Year Warranty

### BioSonic Ultrasonic Cleaning System Accessories



W-UC325  
Cassette Rack for UC300



W-UC311 Half  
FingerGuard Basket with 2 Section  
Inserts for UC300



W-UC310 Large  
Basket for UC300



W-UC53  
Beaker 600ml

W-UC153  
Positioning Cover

## ULTICLEAN Ultrasonic Bath

### Features:

- State of the art 4 litre capacity ultrasonic bath with optional heat
- Wave technology gives a uniform cleaning pattern that eliminates hot spots and weak areas, giving constant power and consistent output
- Smooth, quiet operation and easy to clean housing
- Hinged automatic locking lid - prevents opening during cycle
- Easy to use built in drain facility
- Touch pad controls with 60 minute timer



BA-BATH 4L Ultrasonic Bath  
 BA-BATHBASKET Accessory Basket Kit

# Infection Prevention

## Detergents & Disinfectants - Suction

### OraCup Care System



User-friendly, closed care system for the disinfection and cleaning of suction units and amalgam separators.

#### Features:

- Generates an air/water mixture for optimum moistening and effective cleaning of the suction system
- Rationalised Workflow – one system for the aspiration and suctioning of usable solutions
- Connection adapter for all suction hoses



### MD 555



Foam-free cleaning concentrate for all kinds of suction units and amalgam separators.

- Dissolves incrustations of lime and powder spray agents
- Intensive cleaning effect against deposits and sludge
- Tested material quality – recommended by leading unit manufacturers
- Ideal in combination with Orotol Plus
- Use as part of the OraCup Care System
- Available in 2.5L Concentrate Bottle



### Orotol Plus

Aldehyde and foam-free super concentrate for the simultaneous disinfection, deodorisation, cleaning and care of all dental suction systems and amalgam separators. Toxicologically safe, biodegradable.

#### Features:

- Just 2% application concentration
- Range of action: bactericide, tuberculocide, fungicide, anti-viral (covered viruses, adeno-viruses HBV, HCV, HIV)
- Dissolves and disinfects bio-film and prevents the formation of sludge (blood and proteins)



### Orotol Ultra

Powder concentrate for simultaneous disinfection, cleaning, deodorisation and care of all suction units and amalgam separators.

- Range of action: TB, sporicidal (effective against Clostridium difficile), fungicidal, virucidal
- Low application concentration (1 %)
- Available as: 500g sachet



### Puli-Jet Gentle



Effective disinfection for your suction system. Daily disinfection of the suction system is vital to keep suction lines clean and maintain suction equipment and pump. Puli-jet Gentle strength as a disinfectant means that it kills bacteria, helping to maintain a safe work environment.



# Infection Prevention

## Cleaning & Sanitation of Aspiration Lines



### **CliniJet-DS (Daily)**

CliniJet-DS should be used each day as part of the routine maintenance and sanitation of aspiration lines and to assist the removal of bioburden.

*Passes the TGA Disinfectant Test Option B.*  
5L Container and 15L Container



### **CliniJet-WS (Weekly)**

CliniJet-WS should be used once or twice per week as part of the routine maintenance and sanitation of aspiration lines and to assist the removal of bioburden.

*Highly effective sanitiser and de-scaler helps remove soils that are resistant to other detergents.*

1L Container

## Cleaning & Disinfecting Equipment & Surfaces



### **Plasdet**

#### **The Sensitive Solution**

Plasdet is a clinical detergent specially formulated for cleaning even the most sensitive plastics.

500ml  
5L Container  
500ml Office Dispenser (Empty)



## Detergents & Disinfectants - Waterline

### **Dentapure**

Dentapure treats dental unit waterlines by reducing harmful bacteria exposure to patients and staff.

#### **Features:**

- Dentapure eliminates the need to mix tablets or chemicals, requires no daily, weekly or monthly protocols. Change every 365 days\*.
- It does not contain silver or other hazardous chemicals.
- The elemental iodine in Dentapure does not contain allergenic proteins.
- Dentapure makes compliance with infection prevention guidelines simple but effective.

\*For treatment units where a high volume of water is being used an earlier change maybe necessary. Iodine test strips are available for testing closer to the working life of the product.



# Infection Prevention

## Detergents & Disinfectants - Surface

### Mikrocid® Alcohol-Free Cleaning & Disinfecting Wipes & Liquid

schülke →



#### Features:

- Broad spectrum of efficacy including bacteria, fungi and viruses (including HBV, HCV and HIV)
- Ideal for all surfaces especially dental chairs and alcohol sensitive surfaces
- Alcohol free, surfactant based product with a 1 minute contact time
- Ready to use solution
- Dries quickly, ideal for use between patients

### Neutral Detergent Wipes

HENRY SCHEIN®  
CORPORATE BRAND



Cleans soil and contaminant from surfaces prior to disinfection.

#### Features:

- pH neutral, non-ionic
- Low foaming surfactant

### Ultra Wipes

Hospital Grade Disinfection Wipes

Henry Schein Ultra Wipes are used for rapid disinfection and decontamination of hard, non-porous surfaces.

Broad spectrum, multi-purpose disinfectant cleaner for use on plastics, stainless steel, nonporous vinyl and upholstery, painted surfaces, glass, etc.

#### Features:

- Low Alcohol
- Formulated and tested in Australia



### Optim Blue

OPTIM BLUE is a balanced, one step cleaner AND disinfectant that surpasses the performance of most competitor's wipes.

#### Features:

- Superior cleaning efficacy provides confidence that disinfection will occur
- Strong disinfection capabilities against difficult to kill non enveloped viruses: Norovirus, Parvovirus, Poliovirus - not all disinfectants kill them!
- Does not contain harsh chemicals that require health and safety warnings
- Environmentally sustainable and responsible - the active ingredient breaks down into water and oxygen!
- Unique, durable wipe material that stays wet longer and distributes the disinfectant effectively!

COLTENE

SciCan



I n t r o d u c i n g | R a d i c 8

## World Leading Air Purifiers with Viruskiller™ Technology



Leading the global fight against aerosol pathogens, and perfect for all areas of the dental practice, the Radic8 range of air purifiers will sanitise reception, hallways and operator areas in any dental setting. The sterilisation is achieved in a single air pass. Protect your staff and your patients with this patented technology which neutralises all airborne pathogens through a combination of filters and air sterilisation. Even mercury vapour and other gases are neutralised.

Destroys a wide range of bacteria &amp; airborne pathogens



Pathogens



Bacteria



Mould



Pollen

Exhaust  
Fumes

The Radic8 range is available now In New Zealand exclusively.



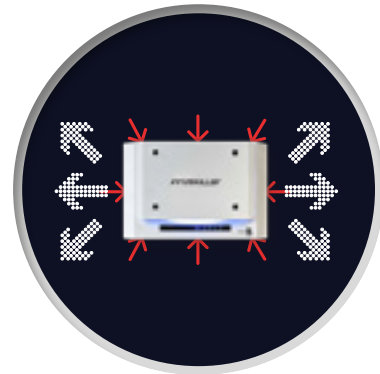
## Range Overview

### VK401

With its large air exchange capacity, the VK-401 wall mounted unit is ideal for dental surgeries, meeting & waiting rooms

- Low running costs
- Stylish & Compact
- Simple installation & maintenance

Neutralises pathogens in large areas up to 60m<sup>2</sup>



- Purified air
- Contaminated air

### HEXTIO\*

Ideal for benchtop use in dental settings. Reception desk, small consulting rooms, this unit is portable and can be placed anywhere

- Low running costs
- Wall-hung or Free Standing
- Simple installation & maintenance

Neutralises pathogens in large areas up to 20m<sup>2</sup>

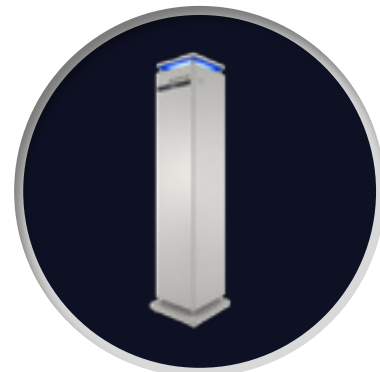


### VK103

Floor standing and perfectly suited to open plan spaces and large waiting areas

- Low running costs
- Free Standing
- Simple installation & maintenance

Neutralises pathogens in large areas up to 105m<sup>2</sup>



# CAD/CAM Equipment

## Chairside Scanners

### Emerald S

True colour hyper-speed scanning

#### Easy to share

Plug-and-play capability allows effortless sharing between operatories and laptops

#### Small and lightweight

Compact and ergonomic body – easily fits in your hand for more control while capturing images

#### Streamlined tooth shade capture

Shade assistant feature simplifies the colour-matching process through improved colour uniformity



#### Replaceable cord

Reduces wear and tear, extending the scanner's life cycle

#### Lowered power consumption

Next-generation technology results in a more efficient scanner with lower overall power consumption

#### Customisable appearance

Easily customisable to meet the colour scheme of your office with an assortment of colours – green, pink, blue and grey.

### TRIOS

Entry level scanning to high tech preventive care... and everything in between!



# CAD/CAM Equipment

## Superior accuracy with outstanding speed

Captures images at lightning speed with a richer and more vivid colour palette

## Reliable infection control

Smaller, seamless, and autoclavable tips for enhanced infection prevention

**PLANMECA**



## Large field of view

Captures a comprehensive view of the patient's oral health and visualises the oral health conditions effortlessly

## Hygienic hands-free operation

The scanner's two buttons allow the scanning software to be operated without touching a mouse or keyboard. The dental unit integrated scanner can also be controlled from a foot pedal

## Active antifog scanning

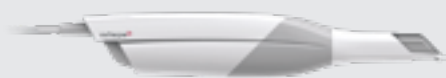
Automatic fog prevention allows continuous scanning and reduces scan times. Three scanning tip options available for different needs

**3shape**

**TRIOS 4**

**TRIOS 3**

**TRIOS 3 Basic**



### Go Beyond

#### ANALOG

- Superior scanning technology
- Unrivaled open system

TRIOS 3 Basic – an intraoral scanner with a simple 'scan and send-to' workflow. Get award winning scanning at an entry-level price

### Go Beyond

#### SCANNING

- Superior scanning technology
- Unrivaled open system
- Patient excitement apps
- In-house design and production

Combine award-winning TRIOS scan technology with next-level patient communication tools and a broad range of in-house production possibilities.

### Go Beyond

#### TREATMENT

- Superior scanning technology
- Unrivaled open system
- Patient excitement apps
- In-house design and production
- Caries diagnostic aid and monitoring tools
- Preventative care possibilities

3Shapes most advanced scanner helps you take your dentistry above and beyond. It comes with increased battery life (+30%), optimised wireless performance, smart tips and ground-breaking caries diagnosis technology for surface caries.

# CAD/CAM Equipment

iTero

## I'm the iTero Element 2 and I bring innovation to visualisation.

I'm here to help you do what you do - only better. With faster processing and clearer imaging, I'll transform your digital workflow and your chairside consults, so you can help your patients visualise their new smiles – and say yes to treatment.



## I'm the iTero Element 5D and I expand your spectrum of visualisation.

Give your practice a new dimension. The first hybrid dental imaging system that simultaneously records 3D, intraoral colour and NIRI images and enables comparison over time using iTero TimeLapse technology.

Visual technology that ushers in a new era of patient engagement.



Both the Element 2 and Element 5D are available as scanner and laptop systems allowing a smaller footprint and improved portability.

## Model Scanners

### Redline E Scanners

Now 20% FASTER!

In today's digital era, a solid CAD/CAM system has become essential for even the most cost-conscious labs. With its new affordable E scanners, 3Shape makes advanced CAD/CAM accessible to labs of all sizes while raising the bar for entry-level solutions.

#### Features:

- **Best value for money**  
Get advanced scanning features and CAD design workflows at an affordable price
- **Fast scanning**  
High scan speeds let you complete more cases in less time
- **Latest technologies**  
5 MP cameras, Blue LED and multi-line scanning for optimal detail capture and accuracy
- **Auto-start for high productivity**  
No need to press a button. Starts scanning as soon as you place the model inside
- **Reliable impression scanning**  
Scan impressions directly without pouring a model, saving time and costs

E1

3shape



Essential scanning to digitise your lab.

#### Features:

- 2 x 5 MP cameras, Blue LED Multiline
- Accuracy (ISO 12836 / implant): 10 µm
- Scan speed (arch): 40 sec
- Scan speed (full arch impression): 130 sec
- Texture: n/a

# CAD/CAM Equipment

E2

3shape 



Increased productivity and texture scanning.

**Features:**

- 2 x 5 MP cameras, Blue LED Multiline
- Accuracy (ISO 12836 / implant): 10 µm
- Scan speed (arch): 30 sec
- Scan speed (full arch impression): 90 sec
- Texture: B&W

E3

3shape 



High performance and implant bar accuracy.

**Features:**

- 2 x 5 MP cameras, Blue LED Multiline
- Accuracy (ISO 12836/ implant): 7 µm
- Scan speed (arch): 22 sec
- Scan speed (full arch impression): 80 sec
- Texture: Colour

E4

3shape 



Ultra-high speed and accuracy with 3Shape's fastest and most accurate scanner

**Features:**

- 4 x 5 MP cameras, Blue LED Multiline
- Accuracy (ISO 12836 / implant): 4 µm
- Scan speed (arch): 9 sec
- Scan speed (full arch impression): 45 sec
- Texture: Colour
- Scanning strategy: Die-in model

D2000

3shape 



All-in-one scanning for maximum volume throughput.

**Features:**

- 4 x 5 MP cameras, Blue LED Multiline
- Accuracy (ISO 12836/implant): 5 µm
- Scan speed (arch): 16 sec
- Scan speed (full arch impression): 65 sec
- Texture: Colour
- Scanning strategy: All in one

# CAD/CAM Equipment

## 3D Printers

### Planmeca Creo C5

**PLANMECA**

Designed for Dental - Just Plug-in and Print

The Planmeca Creo C5 has been developed specifically with the dental professional in mind. The dental 3D printer's robust and compact full aluminium body is designed to withstand the daily workloads of even the busiest dental clinics or labs.

The Creo C5 enables fabricating surgical guides, dental models and aligner bases easily and in a fraction of the usual time. **Get the dental applications you need – when you need them.**



#### Speed meets precision

The Planmeca Creo's distortion-free LCD technology and powerful light source allow remarkably fast printing times, while its robust mechanics ensure both stable printing and accurate results.

#### Scan – Design – Print

Planmeca don't just sell 3D printers – they offer a complete digital workflow. From scan to design to manufacture, Planmeca provides all the necessary tools for planning and completing implant treatments. Design the surgical guide you need in the Planmeca Romexis software and print it with Planmeca Creo C5.

#### Clean and cost-effective material handling

The unique resin handling system and pre-programmed material parameters guarantee a smooth, clutter-free printing experience without cross-contamination between materials. Meanwhile, the 3D printer's innovative material capsules enable easy dosing and storage.

#### Just plug and print

Planmeca Creo C5 is as simple to install as it is to use – a calibration-free dental 3D printer which is ready to print out of the box.

#### Printing materials for Planmeca Creo C5:

FotoDent Guide – biocompatible resin for printing surgical guides

FotoDent Model - high-quality resin for printing dental models and study models

FotoDent Setup - fast printing resin for aligner bases



### Asiga MAX

**ASIGA**

Minimum Footprint, Maximum Productivity

Asiga 3D printers are proven as best-in-class for digital dentistry and offer the highest accuracy of any commercial 3D printer.

The Asiga MAX is the world's most advanced dental 3D printer offering exceptional productivity of everything from restorative dentistry to orthodontic devices in a very small footprint.

- orthodontics
- crown & bridge
- custom trays
- dental models
- surgical guides
- partial dentures



#### Connectivity:

- Asiga 3D printers now integrated with exoprint by exocad
- 3Shape DME files available for Asiga 3D printers
- Integrated with 3Shape Implant Studio

#### Fastest Material Changeover:

Asiga MAX offers a faster material change over than any other product on the market. Complete in under 30 seconds!

Asiga offer their own range of 3D printing materials, as well as this their open material system provides compatibility with over 350 materials from the world's leading material manufacturers for maximum flexibility and productivity.



# CAD/CAM Equipment

## Milling Units

### Planmill® 30S

PLANMECA



#### Enter the world of chairside dental milling!

Planmeca PlanMill 30S is an excellent choice for clinics looking for a reliable and high-quality dental milling unit. The single-spindle unit has been designed for highly precise fabrication of dental restorations, allowing clinics to offer same-day convenience to their patients.

- Linear motors for highest precision
- On-board computer for an independent workflow and optimal control
- Guided maintenance – from daily cleanings and water changes to annual preventive maintenance notifications
- High-speed single-spindle milling unit, 11–13 minutes per restoration

**Full chairside integration** - Planmeca PlanMill 30S is part of Planmeca FIT® – the chairside CAD/CAM system that combines the entire restorative workflow, from scanning to designing and milling.

**High-quality dental milling** - rotary axis enables milling both sides of a block with the same high-speed spindle.

**Automated tool changing** - Equipped with a fixed 5-station tool changer.

**Versatile dental milling** – can be used to mill blocks and abutment blocks.

#### Materials for Planmill 30S

##### Glass Ceramics

- IPS Empress CAD • IPS Empress CAD Multi • VITABLOCS Mark II
- VITABLOCS TriLuxe forte

##### Glass Reinforced Ceramics

- IPS e.max CAD • VITA SUPRINITY PC • Straumann n!ce

##### Reinforced Composites

- VITA ENAMIC • VITA ENAMIC multiColor • GC CERASMART
- Tetric CAD

##### Temporary Materials

- Telio CAD

##### Zirconium Materials

- IPS e.max ZirCAD • IPS e.max ZirCAD Multi

##### Abutment Blocks

- Viteo Base Ti

1

Spindle

5

Tools

1

Block

Wet Milling of Blocks

Z4

vhf



The Z4 was developed for same-day dentistry applications. Its futuristic housing and intuitive, easy-to-use operating controls conceal a high-precision milling and grinding machine that shares the "DNA" of the best laboratory machines available today!

The digital workflow makes it happen: you and your patients can benefit from more pleasant treatments with first-class restorations in just one session. The Z4 is an investment that will pay for itself in no time: high-quality restorations with maximum independence.

#### Complete Independence

- 30 block materials from 12 manufacturers – and growing
- 140 titanium and CoCr prefab abutments from 11 manufacturers
- Validated with all established scanners and design software
- Fully integrated workflow with TRIOS Design Studio (3Shape), DWOS chairside (Dental Wings) and exocad ChairsideCAD
- Integrated PC with touch screen and Wi-Fi – no laptop or tablet necessary
- Built-in compressed air – no compressor need

#### Highest Precision

- Milling and grinding in ultra HD
- Heavy industrial quality
- 3 microns repetition accuracy

#### Fastest Production

- Restorations in under 10 minutes
- 2-second block insertion
- 100,000 RPM electrical high frequency spindle

#### Extremely Economical

- Clear water – no additives necessary
- Automatic changer for 6 tools
- Self-opening working chamber door and drawer
- Easy to learn, easy to operate
- Worry-free 24-month warranty

#### Materials:

- Glass ceramics
- PMMA
- Zirconium oxide
- Composites
- Prefabricated titanium abutments

4

Axes

6

Tools

1

Block

Wet Milling of Blocks

# CAD/CAM Equipment

## K4 Edition

**vhf**



Extremely compact design combined with uncompromisingly rigid construction ensures that you will achieve first-class results – even on extremely hard non-precious alloys.

**4** Axes  
**7** Tools  
**1** Blank

Dry Milling of Discs

## S5

**vhf**



### Dusk-till-dawn milling and grinding

**No material is off limits!**

**Maximum freedom of indication!**

The S5 is a highly versatile dental milling machine. It has five simultaneously operating axes, a blank changer for eight blanks and is designed for both dry and wet machining. With the optional wet grinding module, you can grind all common types of glass ceramic.

Thanks to the eight fold blank changer, you get performance that won't stop. The changer can be loaded with blanks via a small flap in the front and the correct blank for your milling job is then automatically inserted into the clamping device when needed. As a result, you can mill around the clock.

The S5 can be equipped with a wet grinding module. Liquid nozzles are already mounted to the spindle to cool the tool during grinding.

**8** Discs  
**24** Blocks  
**48** Abutments

Wet and Dry Milling of Blocks, Discs and Abutments

## K5+

**vhf**



With the new K5+, you will achieve perfect milling results. Process a wide range of materials and indications (blanks up to 40 mm) with five axes. Revolutionary technologies, such as tool-free blank clamping and an integrated ionizer, help you achieve top-quality results. The particularly stable machine bed construction made of a solid cast body ensures first-class machining results.

**5** Axes  
**16** Tools  
**1** Blank

Dry Milling of Discs

## R5

**vhf**



With the R5 – a new high-end machine for the dental laboratory – vhf has developed a highly automated milling and grinding machine that brings revolutionary approaches to the lab along with a ten-fold blank changer for wet and dry machining. In a minimal footprint, it combines utmost precision with maximum stability and is capable of handling any material.

The R5 effortlessly switches between wet and dry machining. In addition to ionisers and active workspace ventilation, the machine also offers an intelligent drying function.

Enjoy the freedom of choice!

No material is off limits: discs, blocks, and abutments.

Maximum freedom of indication: No Limits

**10** Discs  
**60** Blocks  
**60** Prefab Abutments

Wet and Dry Milling of Blocks and Discs



# CAD/CAM Equipment

## DWX-4

The industry's most cost-effective and user-friendly dental mill, the DWX-4 produces single crowns, copings, bridges and hybrid abutments with precision and ease. The DWX-4 is the ideal device for dental practices just getting into digital milling or labs that need a second device for urgent jobs. With the DWX-4 dental milling system, you can quickly and economically mill on-demand in a wide variety of materials, including the latest hybrid ceramics.

### Features:

- Compact dental milling system
- 2-station automatic tool changer
- 4-axis simultaneous lead/worm screw driven machining
- Mills wax, zirconia, PMMA and many popular resin and composite materials
- Capable of milling - Wax for lost-wax castings of gold or leucite, Porcelain for PFM, Zirconia, PMMA and Hybrid and Nano Resin Ceramics

Dry Milling of Blocks

Roland



## DWX-42W

**From in-clinic to dedicated high-production labs, the DWX-42W is engineered to fit your milling needs.**

The DWX-42W enables wet milling of popular glass ceramic and composite resins with high precision and accuracy.

Designed to mill resin pin-type materials, for production of high-quality crowns, copings, 3-unit bridges, inlays, onlays and more.

Wet Milling of Blocks

Roland



### Elevated Performance

- 6-station Automatic Tool Changer (ATC) for uninterrupted production
- Brand new burs offer GREATER STABILITY & FINE MILLING QUALITY
- Newly designed NOZZLES & COOLANT TANK for greater flow and capacity
- 50% FASTER than the previous generation

## DWX-52D

The next generation of the industry's best-selling dental mill has kept everything users love, and then made it even better. Reliable, precise and affordable, the DWX-52D 5-Axis Dental Mill now offers better disc handling, more material capabilities, improved tool management and other enhanced features in a machine with added efficiency.

### Features:

- Capable of 5-axis simultaneous machining to achieve complex cuts
- Precision milling of Zirconia, Wax, PMMA, Composite resin, PEEK, Gypsum, Glass fiber reinforced resin and Chrome Cobalt sintered metal
- Continuous milling with a 15-station Automatic Tool Changer and auto-adjusted air pressure in response to the CAM software material data.
- Diagnostic notification system alerts user of machine status

Dry Milling of Discs

Roland



## DWX-52DC-i

Roland

NEW!



The ultimate in ease, material flexibility and unattended production, the DWX-52DCi dental milling machine expands your lab production and profit. With a 6-slot Automatic Disc Changer, 15-station Automatic Tool Changer and other automated features, it gives users of all skill levels an exceptionally powerful, efficient and affordable dental restoration solution.

Take dental restoration to a new level with automatic milling of multiple shades of zirconia and many other materials.

Capable of milling: Zirconia, Wax, PMMA, Composite resin, PEEK, Gypsum, Fiber reinforced resin and Chrome Cobalt sintered metal

Dry Milling of Discs

## Dust Collectors



### SILENT CompactCAM Suction Unit

Compact, bag-free extraction unit for use with compact, dental CAM units

#### Advantages

- Bi-directional communication between extraction unit and CAM unit thanks to the PLC interface.
- Low operating noise of max. 55 dB(A).
- 3x longer service life in comparison to conventional collector motors (1,000 operating hours guaranteed).



#### Details

- No follow-up costs due to bag-free dust collection.
- Working without interruption due to uncomplicated motor change within minutes.
- 230-240V

### SILENT COMPACT Suction Unit

Compact, dustbag-free suction with automatic filter cleaning and durable collector motor.

#### Advantages

- No follow-up costs due to bag-free dust collection
- Low operating noise of max. 55 dB(A).
- 3x longer service life in comparison to conventional collector motors (1,000 operating hours guaranteed)



#### Details

- Comfortable operation of the switch-on function through key combination.
- Working without interruption due to uncomplicated motor change within minutes.

## DentalPRO Universal



Stand alone **dust extraction** system for the **Roland DWX** range of CAD/CAM dental dry milling machines.

BOFA's DentalPRO Universal stand alone dust extraction system has been developed to work with the Roland DWX range of dental CAD/CAM milling machines.

The unit's high efficiency two stage filtration process allows technicians to work safe in the knowledge that dust particles are being effectively removed to maintain a clean working environment.

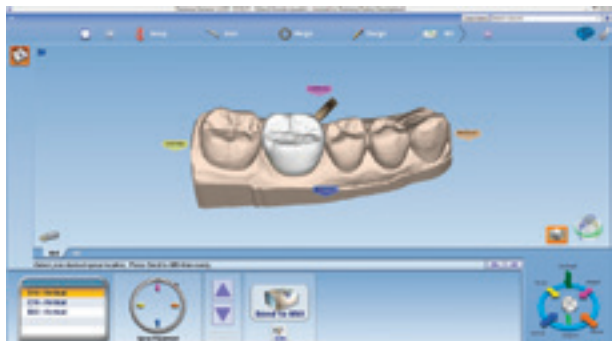
#### STANDARD FEATURES:

- Digital speed control - For variable airflow rates
- Auto sensing voltage (90-257v) for global use
- High vacuum pump for effective capture from source
- Brushless motor (can exceed 30,000hrs use before servicing)
- Interface to Roland milling machine
- Filters with long life and low replacement cost (18 litre)
- High efficiency 5 layer large capacity easy change filter
- HEPA filtration
- Filter full indicator
- Quiet in operation
- Small footprint



# CAD/CAM Software

## Planmeca PlanCAD® Easy **PLANMECA**



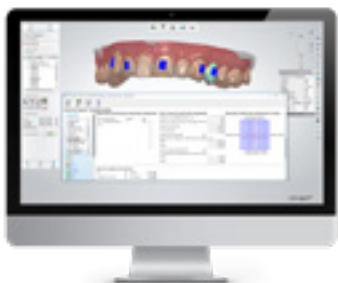
### Planmeca's easy and efficient design tool for prosthetic works

This open CAD software suite, designed especially for dentists, is the perfect tool for sophisticated 3D design and planning at the dental practice. The software is easy and fast to use and is ideal for designing prosthetic works from a single crown to 3 unit bridges. Easy design of inlays, onlays, veneers, crowns and bridges

#### Features:

- Fully automated design from an anatomic tooth library
- Automatic adaptation to contact strength specified by user
- Cusps, marginal ridge and other anatomical shapes are taken to the design from the adjacent teeth
- Minimum material thickness is applied to the design for long-lasting results
- Design up to 16 teeth in the same session
- Superimposed camera view for easy marking of margins
- User-friendly tools to modify the shape and look of the design
- Automatic saving for flexible usage
- Only five steps from work description to milling

## 3Shape Clear Aligner Studio **3shape** All-in-one Orthodontic Solution



Clear aligners represent one of the fastest growing areas within dentistry. 3Shape Clear Aligner Studio enables you to design and produce clear aligners in your own office or via 3Shape manufacturing partners, giving you full control over your workflow.

Get more control over tooth movements and improved visualisation with enhanced setup and staging features, such as per-aligner tooth-specific movement constraints, and timeline and waypoint adjustments.

## 3Shape TRIOS Design Studio **3shape**

Provide same day dentistry with the Design Studio solution

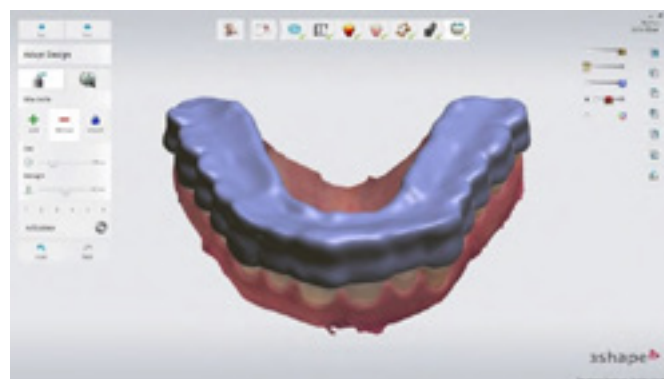


Trios Design Studio software lets you easily design crowns and bridges, inlays, onlays and veneers. It includes Auto-crown design functionality and connection to a wide range of fully integrated milling machines. Open STL output enables use of any manufacturing option and connectivity to any milling centre.

#### Features:

- Easy crowns and bridges, inlays, onlays and veneers
- Auto-crown design functionality
- Open STL output for any manufacturing option or milling centre
- Connect to a wide range of fully integrated milling machines

## 3Shape Splint Studio **3shape** Easily produce splints, night guards and protectors



Splint Studio with automated design functionality lets you design and manufacture splints, night guards, protectors, and similar dental and orthodontic appliances with just a few clicks.

Now you can design and produce these appliances in-house with a simple, fast and intuitive workflow even same-day. The app's powerful software engine calculates the desired splint design in seconds.

# CAD/CAM Software

## 3Shape Implant Studio

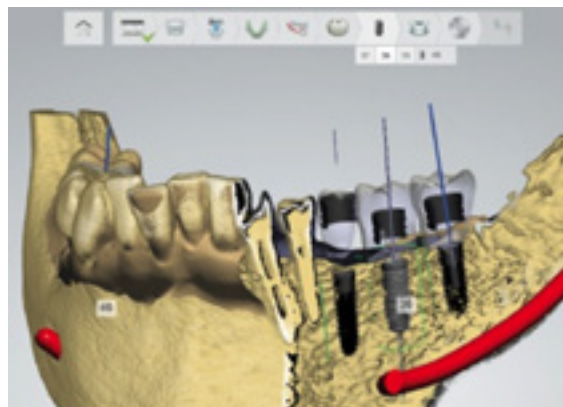


### Digital accuracy and predictability, while improving the patient experience

Dental practices and labs use 3Shape Implant Studio™ for prosthetic driven implant planning and surgical guide design. Planning is based on optimal aesthetics, intended final restoration, available bone and the overall clinical situation. This solution increases treatment predictability and helps deliver a better outcome.

#### Features:

- Prosthetic driven planning
- Open system platform
- A flexible digital workflow
- Locally produce surgical guides at lower costs
- Flexible tools and features



## 3Shape Dental System – For the Laboratory



### A potent and dependable CAD/CAM solution that powers you past the competition

3Shape Dental System gives you the widest range of indications, tools and libraries. Providing integrated and intuitive workflows, a value-packed care program and an ecosystem that freely lets you combine what you use today with what you may need tomorrow.

#### Why choose Dental System:



#### Future proof solutions

- 3Shape innovation by over 275 developers
- Long-term sustainability of hardware and software
- 80 pending patents
- Unlimited software upgrades



#### Stronger ecosystem

- 70+ Implant libraries
- Extensive material and milling center libraries
- Broad integration with 3rd party mills, printers and IOS
- TRIOS® and integrated solutions



#### More indications and better tools

- The widest range of indications including special types
- Powerful tools and design options
- Intuitive interface and guided workflows
- Complete order manager and 3D order form



#### Integrated scanners and documented accuracy

- Complete scanner and software integration
- TRIOS® is an integrated digital colour impression solution
- Documented lab scanner accuracy according to ISO 12836
- Compliance with FDA 21 CFR part 820 and ISO 13485



#### Global customer care

- 100 Support & Training specialists in 13 countries
- Webinars & LABcare™ training packages
- 7 scanner service centers worldwide

